



## 7" All-In-One Touchscreen Panel

### PROA7PLUS

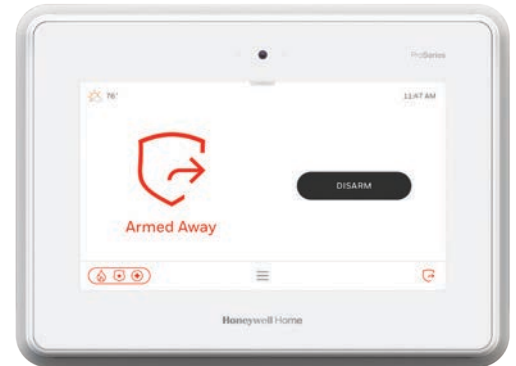
The ProSeries 7" All-in-One Security Panel is a single, self-contained panel that brings together a bright, color-capacitive touchscreen, powerful wireless controller, communicator, microphone, speaker and an 85 dB sounder. Designed for professional installations and upgrades in homes and businesses, the highly scalable All-in-One Security Panel serves as a powerful central hub for security and automation.

ProSeries supports a wide selection of sensors and devices using SiX™ two-way, wireless technology with highly secure AES-128 encryption. SiX devices support over-the-air updates and are locked with the panel, helping to prevent system takeovers. The panel also supports a variety of one-way wireless protocols including legacy 5800, using an optional module. This enables easy and cost-effective system upgrades for your existing install base.

The All-in-One Security Panel delivers an outstanding user experience, with a brilliant 7" color touchscreen display, the convenience of Bluetooth disarming, local voice control and integration with Amazon Alexa. A built-in camera takes a photo of who disarmed the system at the panel and can transmit it to the end-user's cell phone.

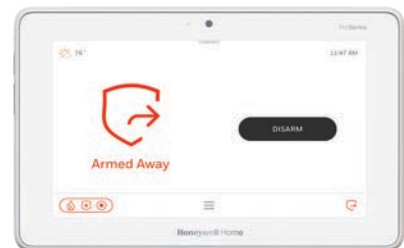
The Pro-Series All-in-One Security Panel integrates with the next generation of Resideo Total Connect, which delivers a faster, more fluid interaction on mobile devices.

For installation and service efficiency, radios and batteries are end-user replaceable, and the AlarmNet 360™ cloud-based business management tool enables easy remote programming, transmits over-the-air software and firmware updates, performs remote diagnostics and monitors and provides analytics on system usage and activity.



7" AIO Security Panel:  
PROA7PLUS

#### Secondary Interfaces



7" Wireless Color Touchscreen:  
PROWLTOUCH



Wireless Touchpad:  
PROSIXLCDKP



# 7" All-In-One Touchscreen Panel Features and Technical Specifications

## FEATURES

---

- **All-In-One**  
Self-contained unit combines 7" graphic touchscreen, controller, communicator, microphone, speaker and sounder
- **ProSeries Platform**  
Part of a broad and highly versatile security and smart home platform with consistent programming, user interfaces and a common range of sensors and peripherals across all solutions. When you learn one, you know them all.
- **SiX Sensors**  
Extensive range of secure, encrypted two-way wireless sensors and peripherals with over-the-air upgrade capability
- **Modular Design**  
User-replaceable, Z-Wave®/Wi-Fi® and cellular radio communications
- **Amazon Alexa Built-In**  
Supports convenient voice interactivity with Alexa functions and commands
- **AlarmNet 360™ Online Management Platform**  
Remote programming and diagnostics to improve business efficiencies and reduce truck rolls; [www.alarmnet360.com](http://www.alarmnet360.com)
- **Optional Resideo Total Connect Remote Services**  
Boost RMR while providing on-the-go security and home control, video viewing, and real-time alerts, anytime, anywhere, on any PC or smart device
- **Anti-Takeover Capability**  
SiX sensors can be locked to the panel helping prevent competitive account takeovers and conversions
- **Built-In Camera**  
Takes photos of user when system is disarmed; viewable through Total Connect mobile app or event log
- **Bluetooth® Disarming**  
Hands-free auto-disarming with a linked mobile phone in proximity
- **Dual Path Communications**  
End-user replaceable LTE communicators and Wi-Fi provide primary and back-up central station communications
- **Smart Home**  
Z-Wave compatibility allows control of lighting, locks, thermostats and other devices; system operation can trigger programmed automated scenes that set devices to the end-user's preference
- **Partitions**  
Program up to four independent partitions; ideal for commercial customers, small offices, retail shops and multi-dwelling homes

## TECHNICAL SPECIFICATIONS

---

### ALL-IN-ONE:

#### Capacities:

**250 Security Zones** (includes SiX and One-Way Devices)

**127 Max. SiX Two-Way Wireless Devices**

#### 78 Z-Wave® Devices:

60 Lights, Water Valves, Shades

6 Thermostats

6 Locks

6 Garage Door Controls

**8 Wireless Keypads** (Touchscreen or LCD)

**32 Remote Key Fobs**

**96 Users**

**4000 Event Log**

### DISPLAY:

7" (177.8mm) [diagonal]

LED-backlit capacitive touch display

1024 x 600 pixel resolution, support for millions of colors

### USER INTERFACE:

**Home Screen:** Security Status, Arming Option, Panics, Weather, Time

**Idle Screen:** Weather, Date, Time, Status, Indoor Temp (if thermostat present)

**Quick Pull-down:** Voice On/Off, Chime On/Off, Alexa Mute, Brightness, Volume, Clean Screen, Battery Status, Connectivity

**Menu Options:** Favorites, Devices, Sensors, Smart Scenes, Settings

**Trouble Indications:** Low Battery, AC Loss, RF Jamming, Sensor/Device Out-of-Range, Communicator Failures, Failure to Communicate, Tamper Conditions, Detector End-of-Life

### SIZE AND WEIGHT:

**Height:** 5.77" (146.6 mm)

**Width:** 7.90" (200.6 mm)

**Depth:** 1.06" (26.9 mm)

**Weight:** 2.10 lbs (0.95 kg)

### PARTITIONS:

4 partitions

# 7" All-In-One Touchscreen Panel Technical Specifications

## **ARMING OPTIONS:**

**Modes:** Arm Away, Arm Home, Arm Night, Arm with No Entry Delay (Instant), Quick Arm, Bypass and Arm, Arm with Silent Exit, Force Arm, Auto Arm, Arm with Quick Exit Option

**Arm/Disarm via Total Connect**

**Arm via Triggers (Schedule, Event)**

## **I/O CONNECTORS:**

**Input and Output:**

Speaker

Microphone

Sounder with 85 dB intensity

Built in camera

**Connectors and Modules:**

Cellular module tray (end-user replaceable optional)

Internal backup battery module (end-user replaceable)

Wi-Fi/Z-Wave module (included)

1-way wireless takeover module (optional)

## **WIRELESS AND CELLULAR:**

**Radios/Modules**

**Max. Plug-in Modules:** 3

**Cellular:** Primary communicator

LTE Verizon: (700, 1700, 1900 MHz)

LTE AT&T: (700, 850, 1700, 1900 MHz),

3G Fallback (850, 1900 MHz)

**Carriers:** LTE: AT&T®, LTE: Verizon®

**Wi-Fi®:** Device connectivity, central station communication

Wi-Fi (802.11 b/g/n); (2.4 GHz); 2 x 2 MIMO

**Z-Wave Plus:** Used for automation

Z-Wave module to support products using the Z-Wave protocol - 500 Series

## **INCLUDED PROTOCOLS:**

**BLE-Bluetooth Low Energy:**

Bluetooth Disarm via cell phone

**RF6-Security Sensors:** 2.4 GHz with encryption - 128-bit AES

**Wiselink:** Use with Motion Viewers (918 MHz)

**Antennas:** SiX™ Two-Way Wireless Technology antenna to support encrypted two way wireless sensors

## **ZONES/SENSORS/WIRELESS:**

**Max. Two-Way Wireless Indoor/Outdoor Motion Viewers:** 8

**Max. Number of Wireless Keypads:** 8  
(Touchscreens and LCD)

**Max. Secondary Wi-Fi Touchscreen Device:** 16  
(Requires Wi-Fi/Z-Wave card)

**Optional module** to takeover 5800, 2GIG, DSC 433 MHz, ITI/Qolsys and Bosch (Part Number – PROTAKEOVER)

## **DEVICES:**

**78 Z-Wave® Devices:**

60 Lights, Water Valves, Shades

6 Thermostats

6 Locks

6 Garage Door Controls

## **USERS:**

**Installer Code:** 1

**PIN Length:** 4 digits

**Credentials:** PIN, Bluetooth® Device, Keyfob

## **BLUETOOTH DISARMING:**

**Max. Bluetooth Device:** 6

**Enable/Disable via AlarmNet 360™**

## **SCENES/AUTOMATION:**

**Max Scenes:** 100 (Requires Total Connect)

**Types of Trigger:** Schedule, Event, Manual

## **VOICE/CHIME:**

**Native Voice Assistant:** Amazon Alexa  
(Enable/Disable via AlarmNet 360)

**Voiced Sensor and System Status Announcements**

**Up to 10 Selectable Chime Sounds** (end-user selectable)

**Mute Options**

## **SOUNDER:**

**Max. Intensity:** 85 dB

## **TWO-WAY VOICE:**

**Required Elements:** PROA7PLUS

## **VIDEO ALARM VERIFICATION:**

**Required Elements:** Indoor or Outdoor Motion Viewer, Total Connect Account, iViewNow Compatible Central Station

## **PROGRAMMING:**

Full Programming via AlarmNet 360 Mobile App or Web Interface

## **BUILT-IN CAMERA:**

**Camera Resolution:** 2MP Fixed

**Photo Resolution:** 640 x 480 pixels

**Viewing Angle:** 68°

**Function:** Captures two Images when system disarms

**View via Total Connect or Event Log**

## **LANGUAGE SUPPORT:**

English, Spanish, Canadian French, Portuguese  
(Installer selectable)

## **MOUNTING:**

**Wall mount back** with power connector

**Optional:** Desk mount kit with plug-in power adapter

## **TAMPER:**

Front and back cover tamper protection

## **POWER:**

**Plug-in power adapter**

**Input:** 110-240VAC, 50/60 Hz

**Output:** 9VDC, 2.5A

**Back-Up Battery**

Lithium-Ion 3.6V, 7500mAh

24 hours of backup power

## **AGENCY LISTINGS:**

ETL listed to UL Std 985, 1023, 1610

ETL to ULC Std S545, C1023

# 7" All-In-One Touchscreen Panel

## ORDERING

PANEL AND USER INTERFACES – US		RESIDEO BRANDED	
<b>PROA7PLUS</b>	7" AIO Security Panel with Wi-Fi/Z-Wave module (included)	<b>PROA7PLUSC</b>	7" AIO Security Panel with Wi-Fi/Z-Wave module (included)
<b>PROWLTOUCH</b>	7" Wireless Touchscreen	<b>PROWLTOUCHC</b>	7" Wireless Touchscreen
<b>PROSIXLCDKP</b>	Customizable Display Wireless Keypad	<b>PROSIXLCDKPC</b>	Customizable Display Wireless Keypad
PANEL AND USER INTERFACES – CANADA		RESIDEO BRANDED	
<b>PROA7PLUSCN</b>	7" AIO Security Panel with Wi-Fi/Z-Wave module (included)		
<b>PROWLTOUCH</b>	7" Wireless Touchscreen	<b>PROWLTOUCHC</b>	7" Wireless Touchscreen
<b>PROSIXLCDKCN</b>	Customizable Display Wireless Keypad		
ACCESSORIES/POWER SUPPLIES			
<b>PROA7DM</b>	Desk Mount Stand for PROA7PLUS/PROA7PLUSC and PROA7PLUSCN		
<b>PROA7XFMUS</b>	Transformer with Terminal Block for PROA7PLUS and PROA7PLUSC		
<b>PROA7XFMCN</b>	Canadian Transformer with Terminal Block for PROA7PLUSCN		

### For more information

[www.resideo.com](http://www.resideo.com)



### Resideo Technologies, Inc.

2 Corporate Center Drive, Suite 100  
 P.O. Box 9040  
 Melville, NY 11747  
 1-800-645-7492  
[resideo.com](http://resideo.com)

L/PS7AIO2D/D | 08/20  
 © 2020 Resideo Technologies, Inc.  
 All rights reserved.  
 The Honeywell Home trademark is used under license from Honeywell International Inc. This product is manufactured by Resideo Technologies, Inc. and its affiliates.

